

CATA Composer R2016 Fact Sheet

“Add a New Dimension to Your Product
Communications”



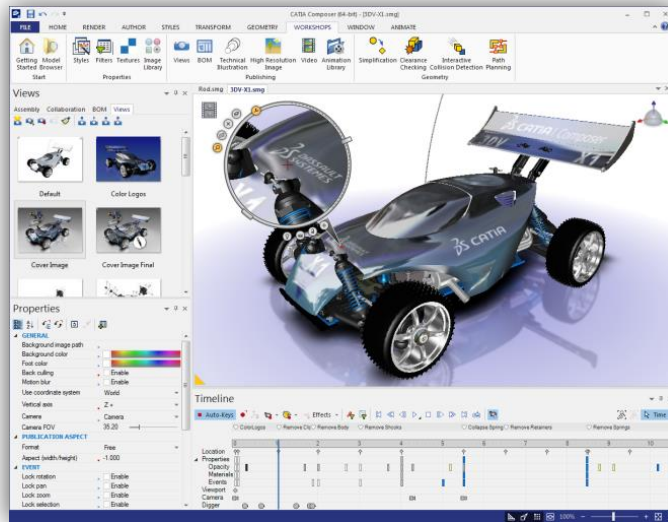
3DEXPERIENCE

Version 1.0 - 8/11/2015

Table of Contents

1. CATIA Composer: VALUE AT A GLANCE.....	3
2. CATIA Composer: Overview.....	4
2.1. Immediate Productivity with Long term Value	4
2.2. A complete system for maximum productivity	5
2.2.1. CATIA Composer Player	6
2.2.2. CATIA Composer Player Pro.....	7
2.2.3. CATIA Composer Player Pro Publishing.....	8
2.2.4. CATIA Composer Sync and CATIA Composer Enterprise Sync	8
3. CATIA Composer: R2016 Key Enhancements.....	8
3.1. New Timeline Tracks.....	9
3.2. Restore Active View Visibility.....	10
3.3. Thick Border for Active View.....	10
3.4. Points Imported as Stay on Top	11
3.5. Support of CATIA V5-6 R2015 (R25).....	11
3.6. New Features in Composer Application Programming Interface	11
3.7. Composer PMI Remover	11

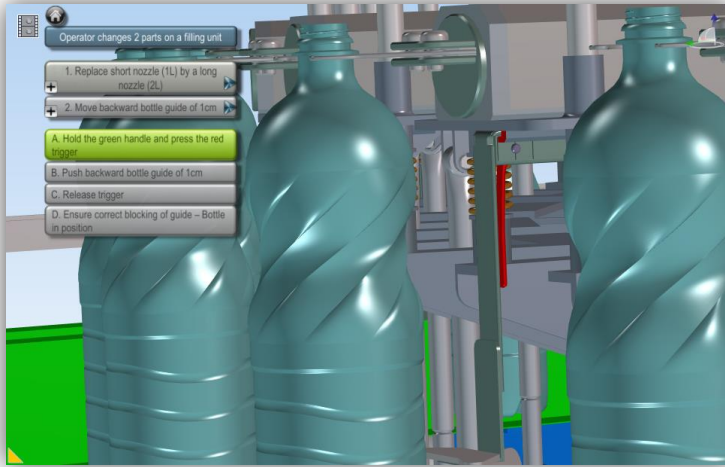
1. CATIA Composer: VALUE AT A GLANCE



Today's product developers are cutting costs, saving time, and growing their competitive advantage with CATIA Composer, the next generation of 3D content authoring software. A flexible and easy-to-use desktop content creation system, CATIA Composer streamlines the creation of product documentation and technical illustrations. For more dynamic product communication needs, CATIA Composer also provides a highly efficient platform for creating animated 3D assembly and maintenance instructions, and interactive marketing communications.

Based on a lightweight XML architecture, CATIA Composer allows non-technical users to create associative 2D and 3D product deliverables directly from CAD data. CATIA Composer helps lower costs and improves time to market by enabling product deliverables to be initiated earlier and updated automatically whenever designs change. By leveraging the power of interactive 3D, manufacturers can produce technical product communications that engage viewers more effectively and clearly explain complex information.

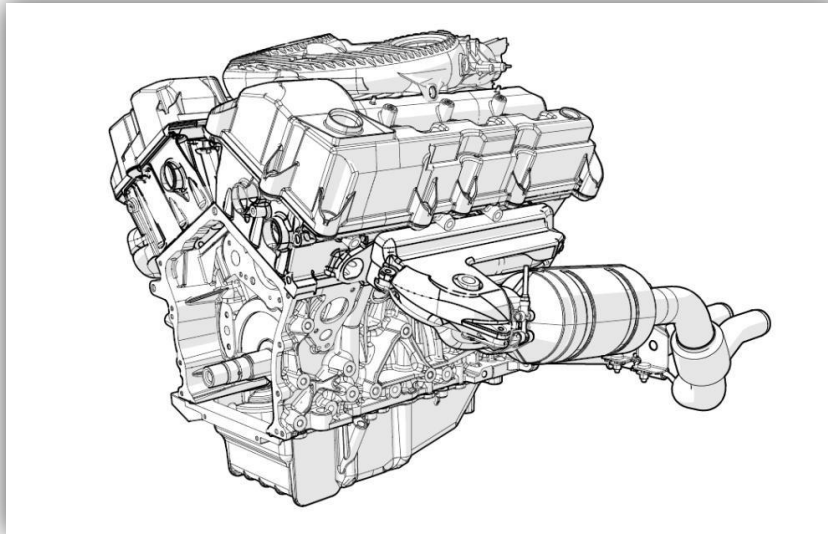
2. CATIA Composer: Overview



CATIA Composer revolutionizes the ability for enterprises of all sizes to communicate technical product information. With its easy-to-use desktop content-creation system, CATIA Composer quickly and easily automates creation of technical illustrations, interactive 3D animations, assembly and disassembly procedures, training applications, sales and marketing tools, and more.

2.1. Immediate Productivity with Long term Value

CATIA Composer allows non-technical users to create associative 2D and 3D product deliverables directly from digital product data.



Easy to learn and use, CATIA Composer is an ideal complement to content-creation tools end-users are already familiar with, such as Microsoft® Office® applications, HTML, and PDF.

CATIA Composer ties together desktop and enterprise systems for both content consumers and content creators. Because it is an XML-based architecture, CATIA Composer is easily integrated with any enterprise information system, including product lifecycle management (PLM) and enterprise resource planning (ERP) applications.

2.2. A complete system for maximum productivity

CATIA Composer is easy to learn and intuitive to use. It is an ideal complement to existing content delivery tools such as Microsoft Office, PDF, and HTML. Even users inexperienced with 3D CAD applications easily create high quality 2D illustrations and interactive 3D animations to support technical product communications.

- Maximize the value of existing product 3D CAD data across the enterprise.
- Clearly communicate product intent with stakeholders during the design phase.
- Better address sales, marketing, customer service, training, support, and manufacturing product communication needs.
- Work in an intuitive authoring environment that does not require previous CAD experience.
- Reduce reliance on engineers to support product deliverables.

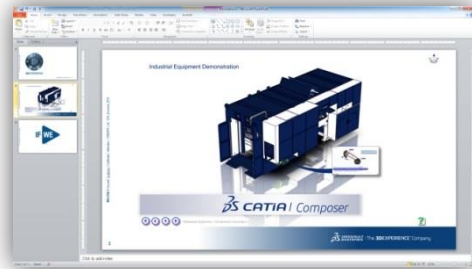
- Communicate technical details more clearly.
- Begin creating product deliverables earlier in the design cycle.
- Deliver products to market faster.
- Keep content up to date automatically.
- Drive down production costs.
- Provide more comprehensive training materials.
- Improve customer service.
- Win new business.

2.2.1. CATIA Composer Player

CATIA Composer Player a free utility, allows content creators to distribute CATIA Composer content to any end user with the same high performance as CATIA Composer. It includes an ActiveX version offering the ability to embed and control 3D interactive content anywhere in any application that supports ActiveX technology. It also includes a plug-in to Adobe Reader to enable enhanced distribution of CATIA Composer content within a PDF file. More robust than a simple viewer, CATIA Composer Player offers content consumers a highly interactive experience with product deliverables.



CATIA Composer Player



CATIA Composer Player ActiveX



CATIA Composer Player Plug-in for Adobe Reader

2.2.2. CATIA Composer Player Pro

CATIA Composer Player Pro offers a powerful API to allow users to query, manipulate, interact, and display – in real time – CATIA Composer content integrated with data originating from external sources. This enables the development of 3D interactive custom applications and creates 3D product experiences anywhere the CATIA Composer Player ActiveX can be used.

2.2.3. CATIA Composer Player Pro Publishing

CATIA Composer Player Pro Publishing provides a publishing solution for situations where a CATIA Composer Player Pro “Enterprise Deployment” is not possible, such as when an application is distributed via portable/removable media, web portals, or the Internet. In such cases, a "Publishing Deployment" is offered through the CATIA Composer Player Pro Publishing agreement and order form. The Publishing Deployment mechanism provides the licensee with a special programmatic handshake with the embedded ActiveX controls, removing the need for the end users to have a CATIA Composer Player Pro license.

2.2.4. CATIA Composer Sync and CATIA Composer Enterprise Sync

CATIA Composer Sync and CATIA Composer Enterprise Sync deliver sophisticated, XML-based associativity between CATIA Composer and any number of enterprise systems.

CATIA Composer Sync is a product to create batch conversion processes from 3D CAD and other 3D formats into the CATIA Composer format. It is designed to automatically incorporate design changes in geometry, meta data, and product structure directly into CATIA Composer content. CATIA Composer Enterprise Sync offers all of the capabilities of CATIA Composer Sync plus the ability to control conversions and updates through a command-line interface, so that converting, updating, and publishing CATIA Composer deliverables can be automated and controlled by external systems.

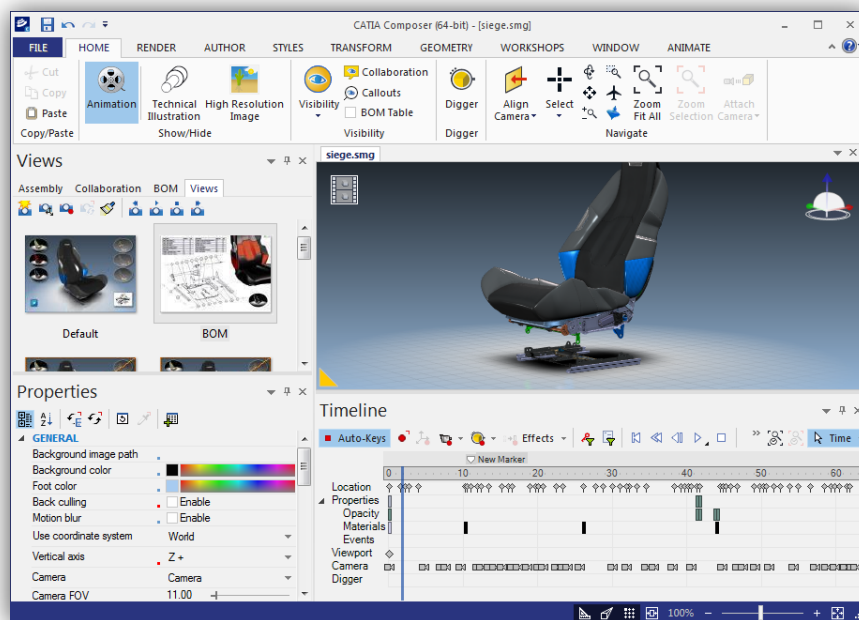
3. CATIA Composer: R2016 Key Enhancements

CATIA Composer is the leading solution for creating highly effective product communications across all manufacturing industries. In R2016, users benefit from new features and enhancements in publishing, import capabilities, measurement, viewing and authoring 2D and 3D product experiences.

3.1. New Timeline Tracks

The timeline has been revamped with additional tracks to offer an array of new functionality for your 3D animations. The existing Camera and Digger tracks remain unchanged. However, the track for actor keys has been split into the following:

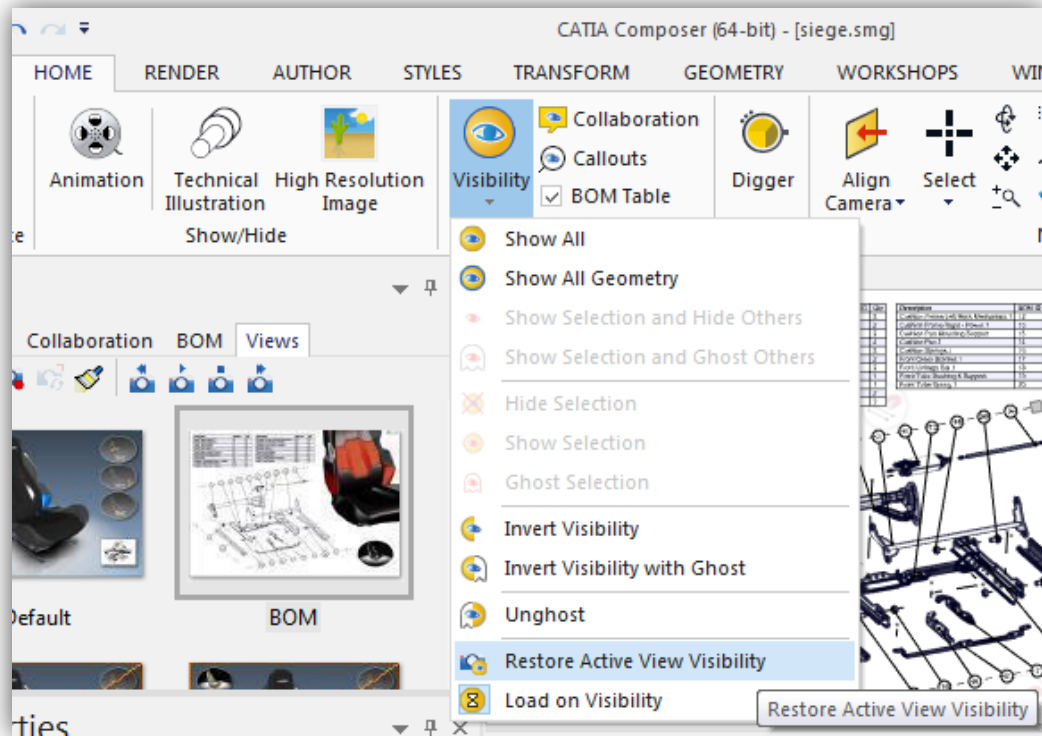
- **Location** track: displays the keys indicating an actor's location.
- **Properties** track: expands into sub-tracks (such as **Opacity**, **Materials** and **Events**) displaying property-related keys.
- **Viewport** track: displays all the viewport property keys..



3.2. Restore Active View Visibility

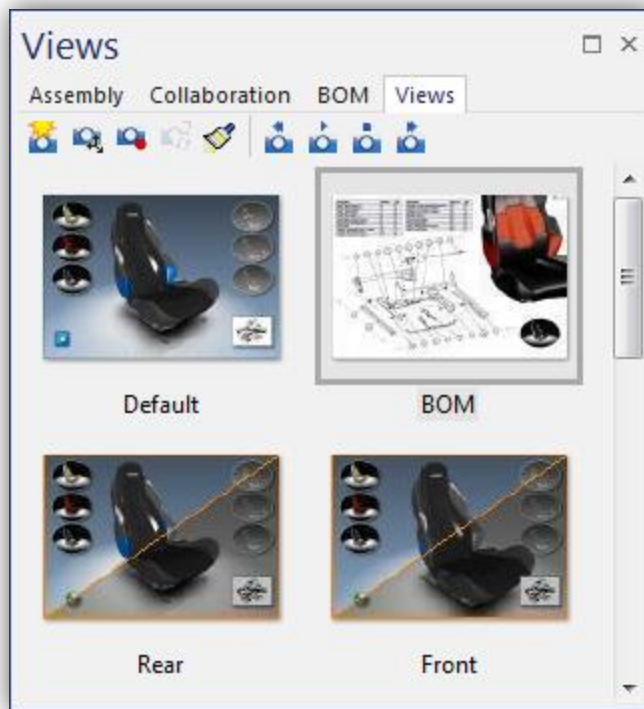
A new visibility command is now available in the Home ribbon to let you restore the visibility of all actors of the active view.

Use it when you have made changes in the view (such as moving or adding actors, changing actors' visibility) and then want to restore the visibility of all actors to the last updated state. Other properties such as color, opacity, position, etc. will not be restored.



3.3. Thick Border for Active View

The active view is now surrounded by a thick border in the Views pane. This enables you to differentiate between the active view and selected views (which are highlighted and surrounded by a thinner border).



3.4. Points Imported as Stay on Top

A new advanced document property, **IOImportPointsStayOnTop**, lets you specify that points and construction points are imported as staying on top.

3.5. Support of CATIA V5-6 R2015 (R25)

CATIA V5-6 R2015 (R25) GA is now supported.

3.6. New Features in Composer Application Programming Interface

The Composer Application Programming Interface (API) has been enhanced with a number of features. For more information, see the *Composer Programming Guide*: click **Help > Programming Guide**

3.7. Composer PMI Remover

If you are facing performance-related issues when loading Composer files (.smg or .smgXml) containing large amounts of Product Manufacturing Information (PMI), a tool is

now at your disposal in the Composer installation folder, that will let you remove this PMI from specified files.

Removing PMI from .smg or .smgXml files reduces their size, and therefore, consequently reduces the time it takes to load these files in Composer.